

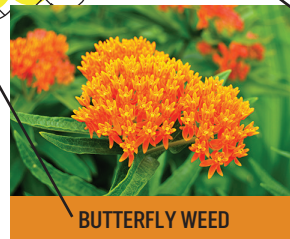
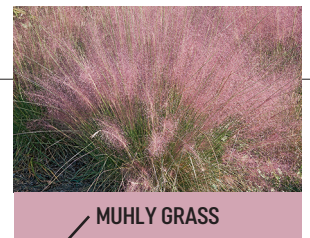
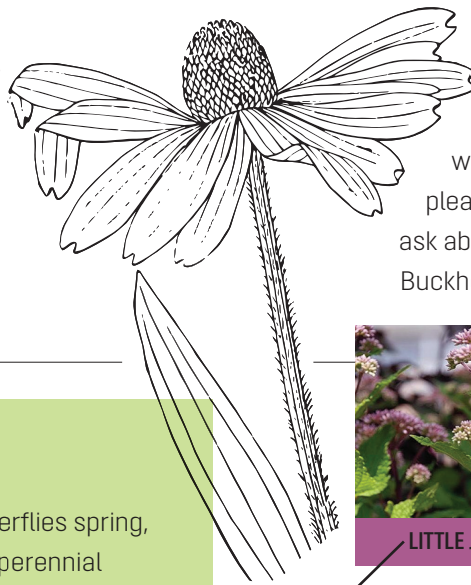
Go Native in Beautiful North Buckhead!

The North Buckhead Civic Association (NBCA) makes it easy and affordable for residents to plant native plants in their home landscapes. Collectively, these gardens will enhance the entire neighborhood.

Native plants beautify our landscapes with their diversity of forms, shapes, and colors. That beauty is amplified by butterflies and birds that native plants support. Native plants are also lower maintenance and help the environment.

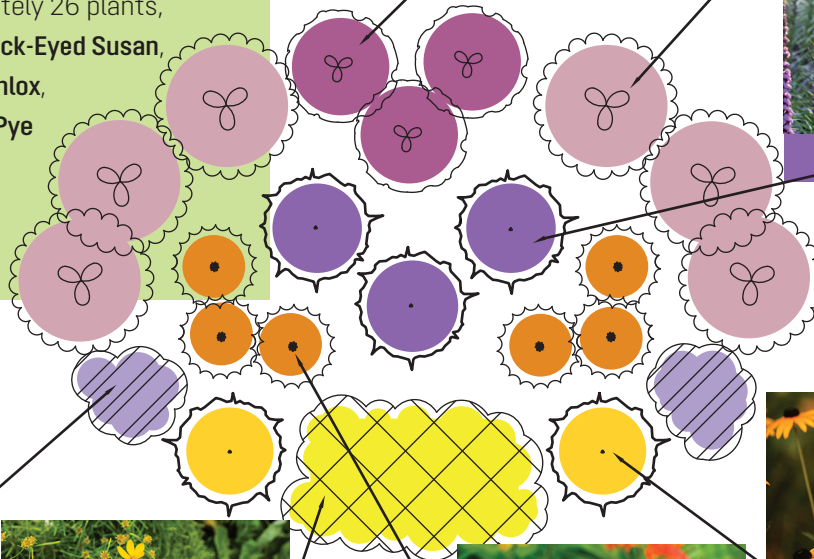
NBCA has created plant lists, planting diagrams, and partnerships to make it easy to create beautiful native gardens. NBCA members receive a 10% discount.

For those who like to do it yourself, you may order plants at ServeScape.com, which will be sourced locally and delivered to your door. For those who want full-service design and installation, please contact Ed Castro Landscaping and ask about the NBCA Beautiful North Buckhead program.



FULL SUN DIAGRAM

Enjoy colorful blooms, birds, and butterflies spring, summer, and fall with this easy-care perennial garden. Consisting of approximately 26 plants, the *Full Sun* garden contains **Black-Eyed Susan, thread leaf coreopsis, creeping phlox, butterfly weed, liatris, Little Joe Pye weed, and muhlygrass**. This design covers approximately 50 square feet.

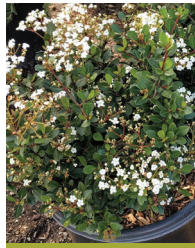


PART SUN DIAGRAM

This symphony of pink, blue, white, and red attracts butterflies and people all season-long. This diagram contains approximately 20 native plants, featuring **purple coneflower**, **blue-eyed grass**, **coral bells**, **phlox**, **carex**, **viburnum**, and **blue gamma** and covers approximately 50 square feet.



CAREX APPALACHICA



WALTER'S VIBURNUM



BLUE GRAMA



CORAL BELLS



PURPLE CONEFLOWER



OAKLEAF HYDRANGEA



WOODLAND PHLOX



BLUE-EYED GRASS

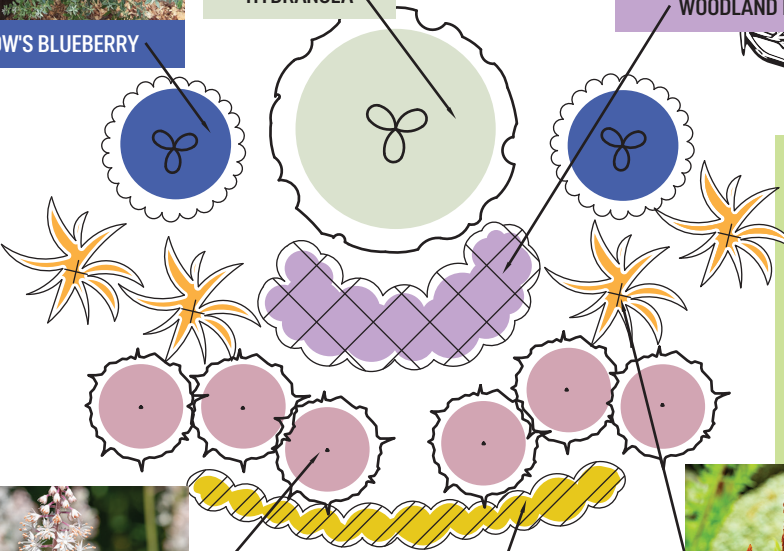


DARROW'S BLUEBERRY



FULL SHADE DIAGRAM

What shade plants lack in showy exuberance they more than make up for in subtle beauty. With our extensive tree canopy in North Buckhead, these plants bring shades of white and yellow to light up shadowy corners of the landscape. Consisting of approximately 20 plants, this diagram covers approximately 50 square feet. Standout plants include **oak leaf hydrangea**, **foam flower**, **blueberry shrubs**, **green & gold**, **cinnamon fern**, and **woodland phlox**.



FOAMFLOWER



GREEN & GOLD



CINNAMON FERN